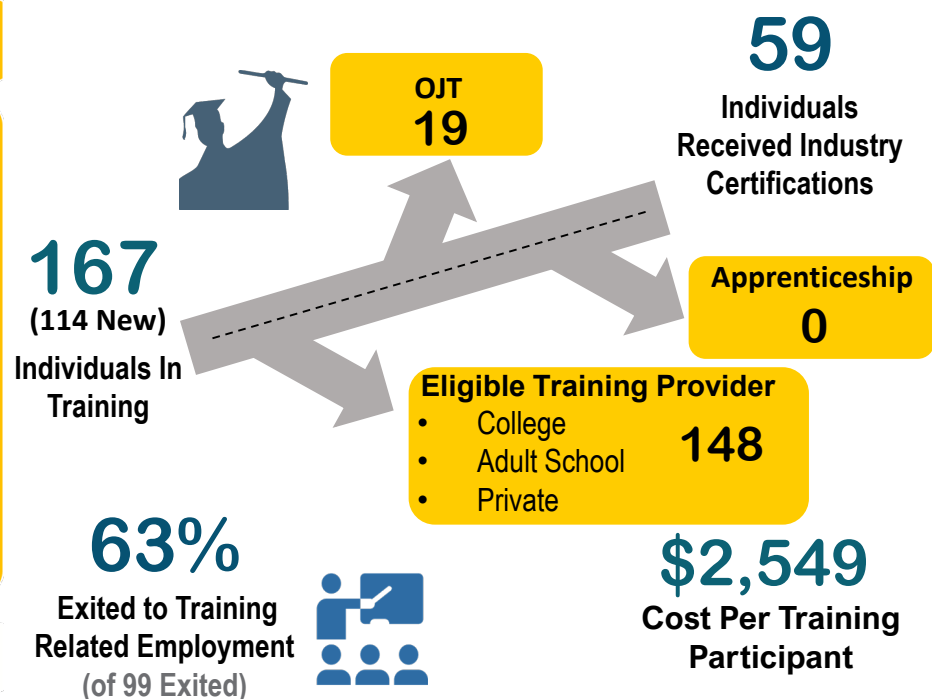
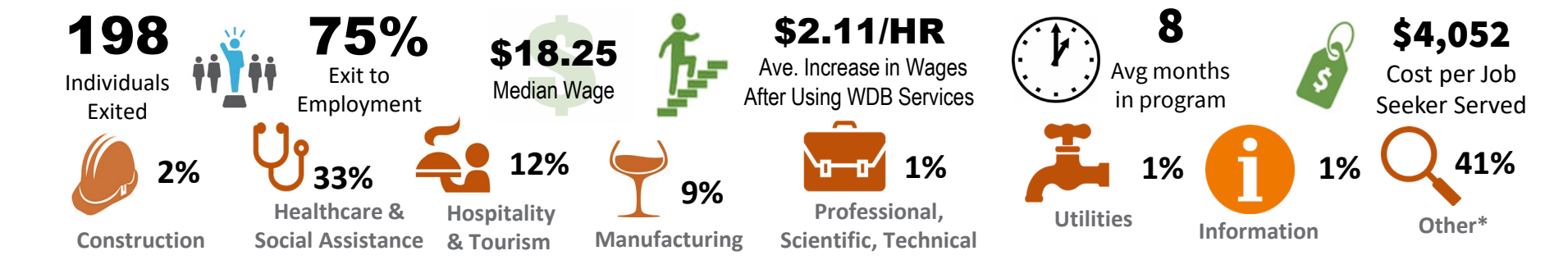


# WIOA Levels of Service

# WIOA Training Services



# WIOA Program Employment Outcomes



## WIOA Adult & DW Priority of Service



Basic Skill  
Deficient  
**3%**



Low Income  
**59%**



CalFresh  
**39%**



Military  
Veterans  
**5%**

## Business Services

**341**

New Businesses  
Engaged

**6**

Rapid Response  
Events

**1541**

Active Business  
Engagements

**219**

Recruitment  
Events Held

## WIOA Adult & DW Barriers to Employment



Disability  
**9%**



Homeless  
**3%**



Justice Involved  
**10%**



English Language  
Learner  
**4%**



Single Parent  
**19%**



In-School  
Youth  
**11%**



Out of School  
Youth  
**89%**

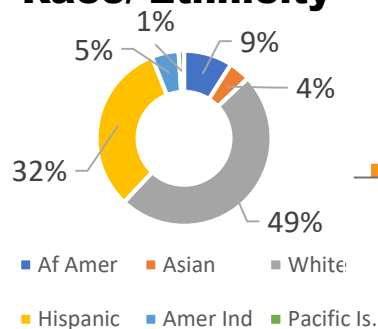


WEX  
**23%**

## WIOA Youth Details

## Program Participant Demographics

### Race/ Ethnicity

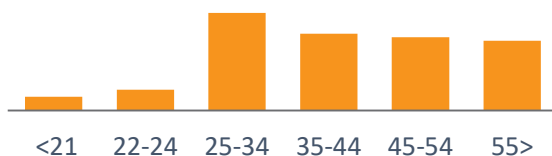


**40%**  
Male



**60%**  
Female

### Age



## Geographics

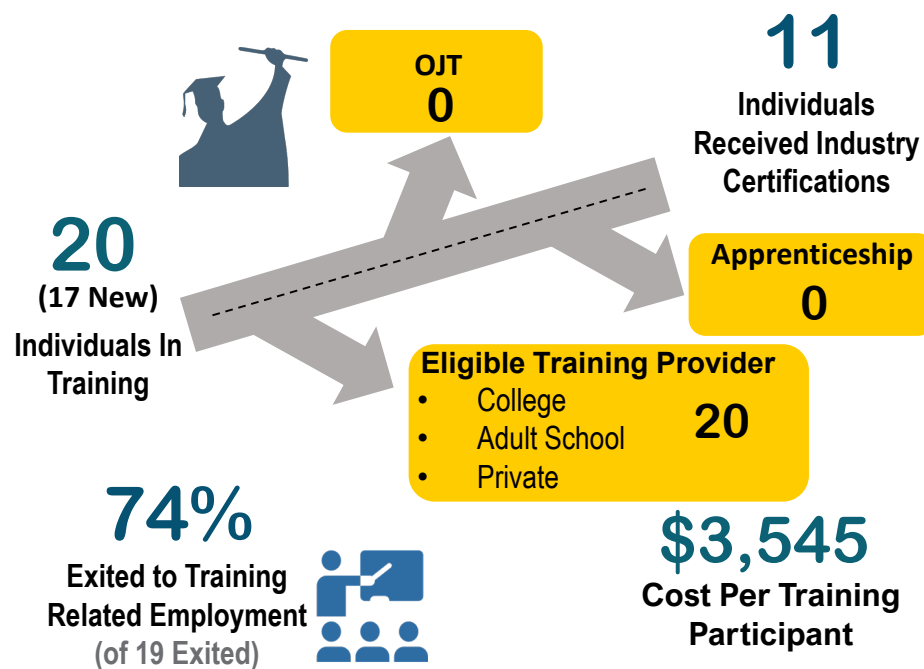
### Cities of Residence

Clearlake 23%	Ukiah 58%	San Rafael 32%	Napa 61%
Kelseyville 18%	Willits 18%	Novato 26%	American Canyon 27%
Lakeport 18%	Redwood Valley 8%	Sausalito 5%	Napa Other 3%
Clearlake Oaks 10%	Hopland 4%	Greenbrae 3%	Unknown 2%
Nice 7%	Fort Bragg 3%	Marin Other 12%	North Bay Other 7%
Lake Other 23%	Mendo. Other 8%	Unknown 4%	
WANB Other 1%	North Bay Other 1%	North Bay Other 18%	

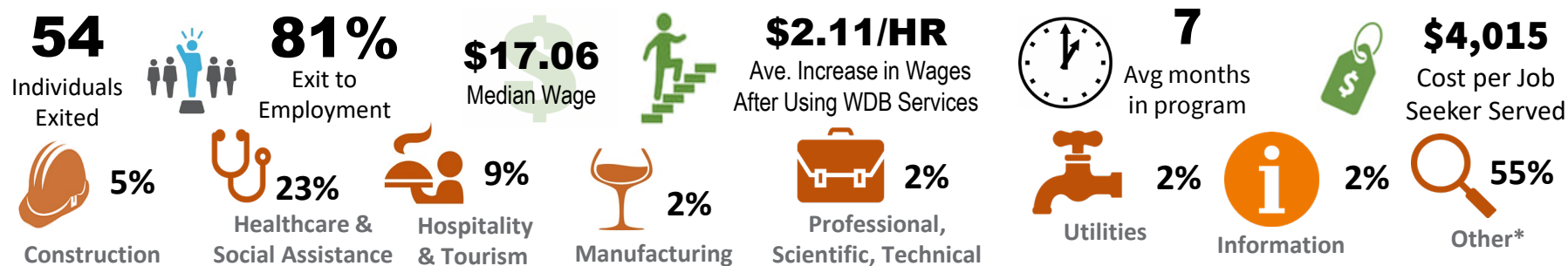
## WIOA Levels of Service



## WIOA Training Services



## WIOA Program Employment Outcomes



## WIOA Adult & DW Priority of Service



Basic Skill  
Deficient  
**2%**



Low Income  
**63%**



CalFresh  
**40%**



Military  
Veterans  
**7%**

## Business Services

**24**

New Businesses  
Engaged

**33**

Active Business  
Engagements

**0**

Rapid Response  
Events

**0**

Recruitment  
Events Held

## WIOA Adult & DW Barriers to Employment



Disability  
**1%**



Homeless  
**0%**



Justice Involved  
**8%**



English Language  
Learner  
**3%**



Single Parent  
**18%**



In-School  
Youth  
**7%**



Out of School  
Youth  
**93%**

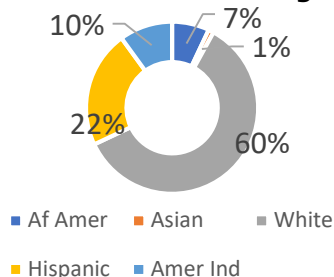


WEX  
**38%**

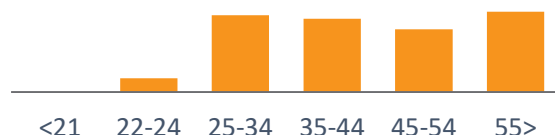
## WIOA Youth Details

## Program Participant Demographics

### Race/ Ethnicity



### Age



**41%**  
Male



**59%**  
Female

## Geographics

### Cities of Residence

Clearlake 23%

Kelseyville 18%

Lakeport 18%

Clearlake Oaks 10%

Nice 7%

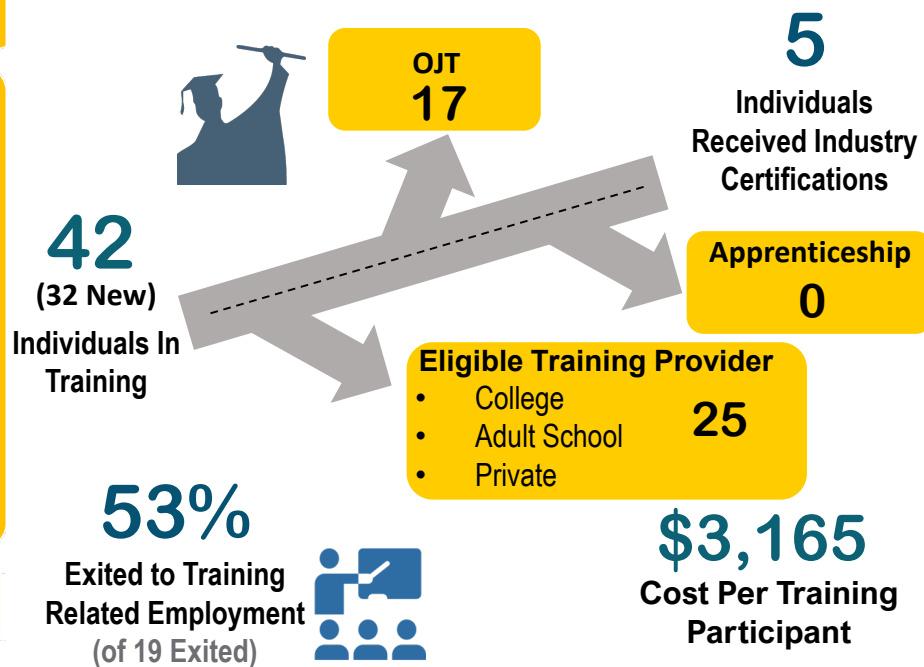
Lake Other 23%

WANB Other 1%

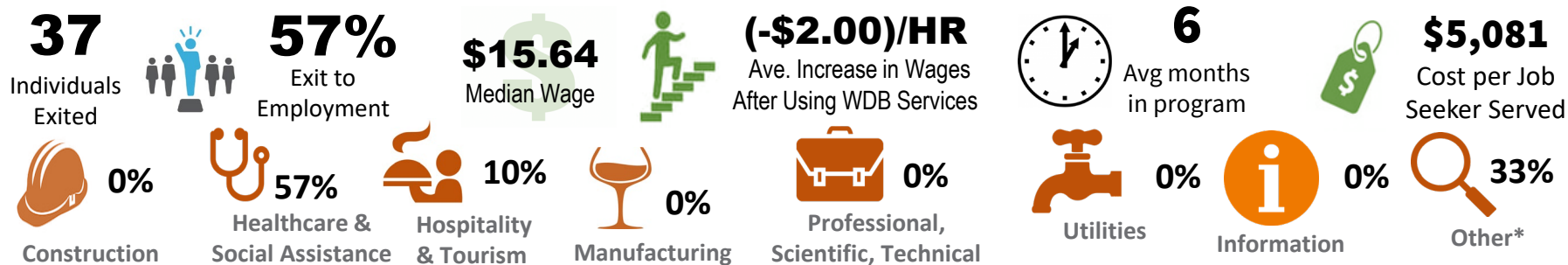
## WIOA Levels of Service



## WIOA Training Services



## WIOA Program Employment Outcomes



## WIOA Adult & DW Priority of Service



Basic Skill  
Deficient  
**5%**



Low Income  
**69%**



CalFresh  
**59%**



Military  
Veterans  
**2%**

## Business Services

**24**

New Businesses  
Engaged

**2**

Rapid Response  
Events

**826**

Active Business  
Engagements

**214**

Recruitment  
Events Held

## WIOA Adult & DW Barriers to Employment



Disability  
**6%**



Homeless  
**8%**



Justice Involved  
**17%**



English Language  
Learner  
**10%**



Single Parent  
**29%**



In-School  
Youth  
**21%**



Out of School  
Youth  
**79%**

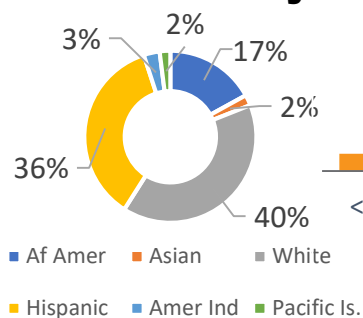


WEX  
**0%**

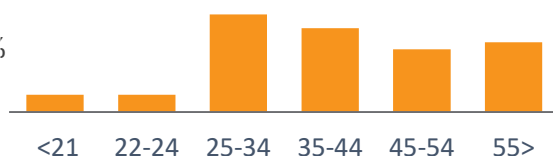
## WIOA Youth Details

## Program Participant Demographics

### Race/ Ethnicity



### Age



**39%**  
Male



**61%**  
Female

## Geographics

### Cities of Residence

San Rafael 32%

Novato 26%

Sausalito 5%

Greenbrae 3%

Marin Other 12%

Unknown 4%

North Bay Other 18%

## WIOA Levels of Service

### Bronze Self Access Services



**CareerPoint**  
**1,869 Individuals**  
**6,890 Visits**  
**1013 Repeat Customers**

### Silver Staff Assisted Services



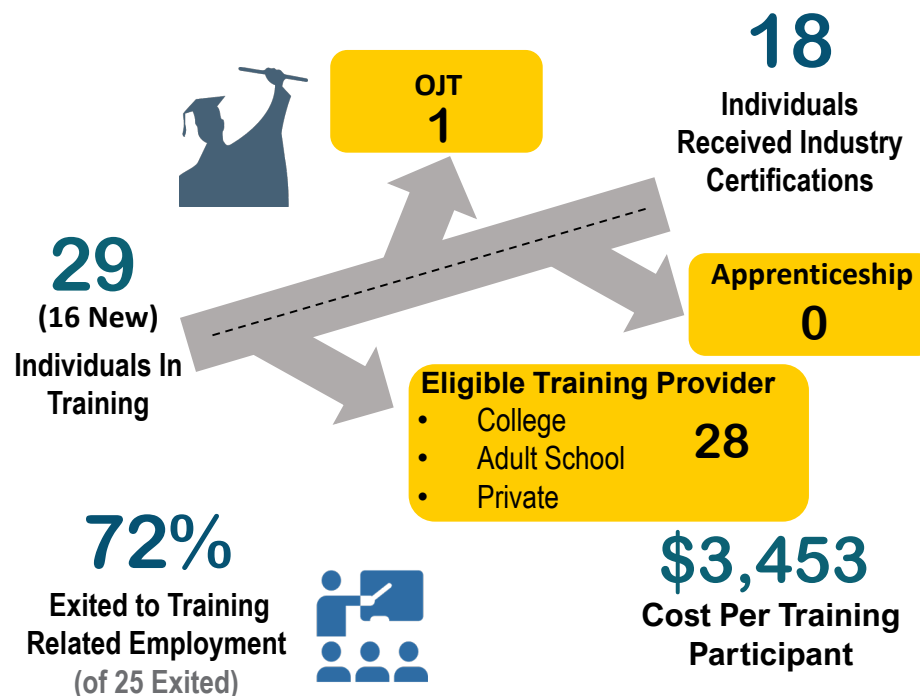
**WIOA Program**  
**79 Participants**  
**35 Adults**  
**44 Dislocated Workers**

### Gold Training Services

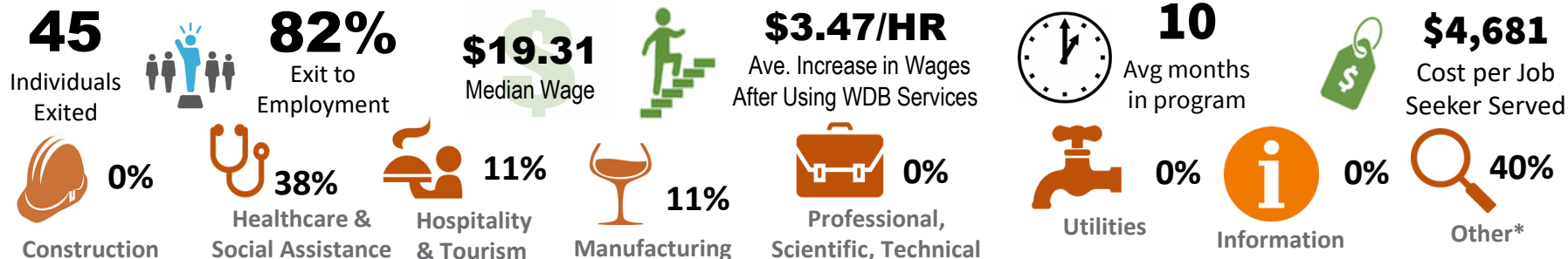


**WIOA Training**  
**29 Recipients**  
**20 Adults**  
**9 Dislocated Workers**

## WIOA Training Services



## WIOA Program Employment Outcomes



## WIOA Adult & DW Priority of Service



Basic Skill  
Deficient  
**1%**



Low Income  
**40%**



CalFresh  
**16%**



Military  
Veterans  
**10%**

## Business Services

**22**

New Businesses  
Engaged

**402**

Active Business  
Engagements

**3**

Rapid Response  
Events

**5**

Recruitment  
Events Held

## WIOA Adult & DW Barriers to Employment



Disability  
**6%**



Homeless  
**3%**



Justice Involved  
**4%**



English Language  
Learner  
**1%**



Single Parent  
**9%**



In-School  
Youth  
**15%**



Out of School  
Youth  
**85%**

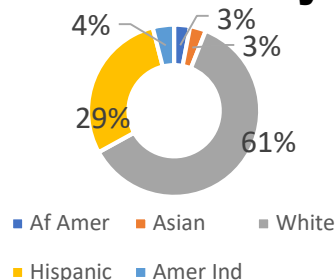


WEX  
**57%**

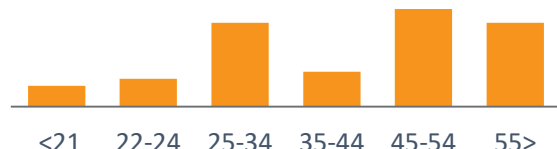
## WIOA Youth Details

## Program Participant Demographics

### Race/ Ethnicity



### Age



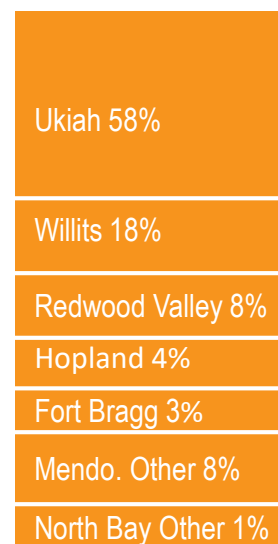
**39%**  
Male



**61%**  
Female

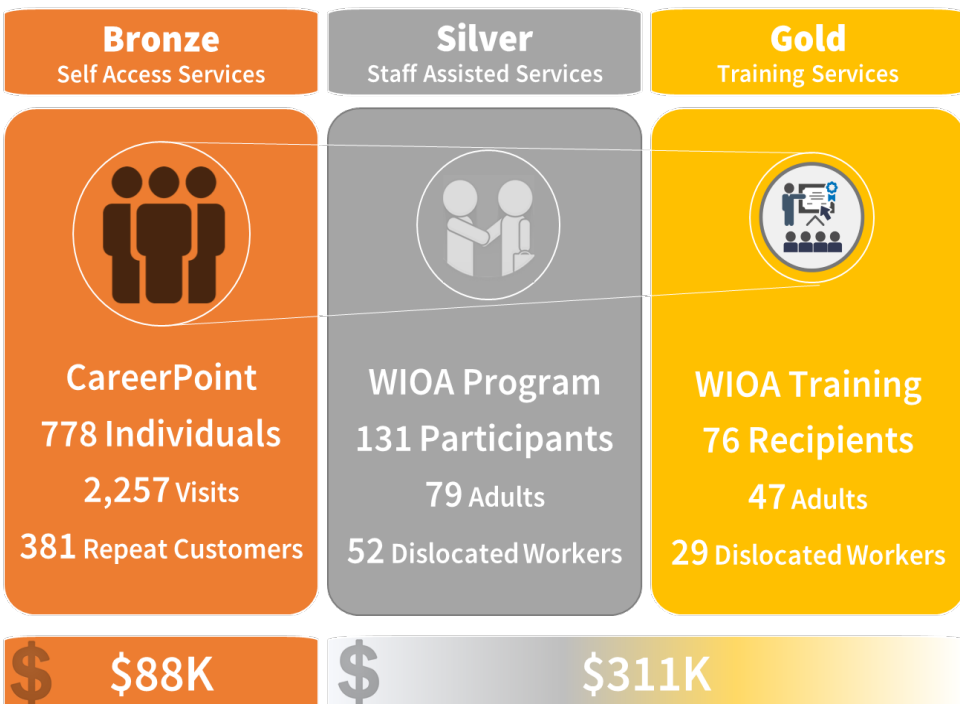
## Geographics

### Cities of Residence

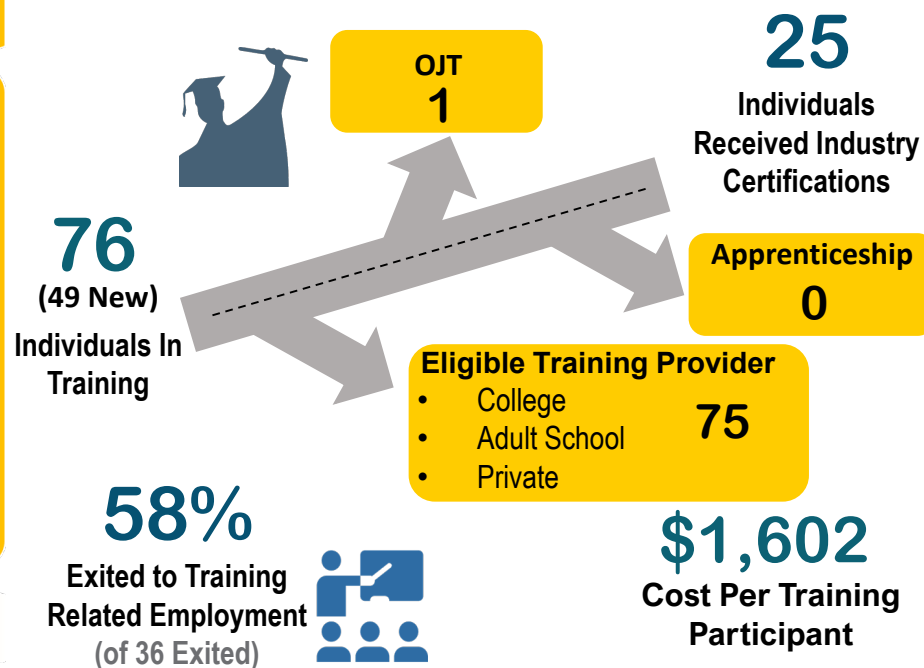




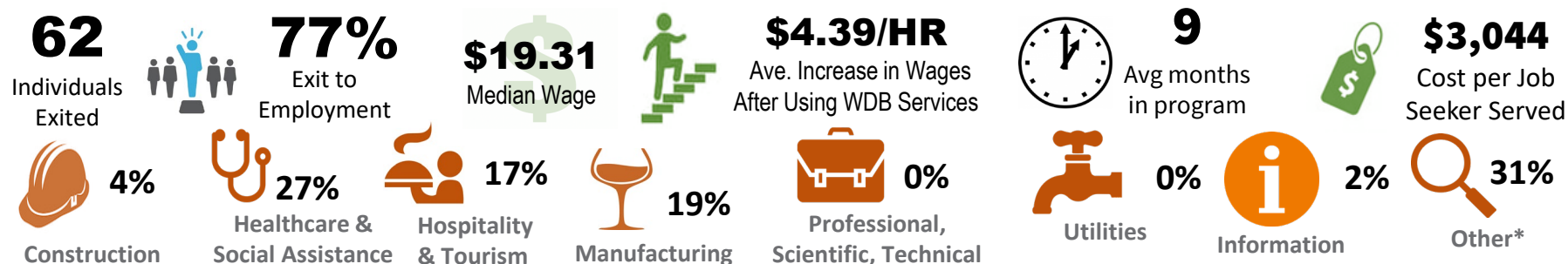
## WIOA Levels of Service



## WIOA Training Services



## WIOA Program Employment Outcomes



## WIOA Adult & DW Priority of Service



Basic Skill  
Deficient  
**4%**



Low Income  
**64%**



CalFresh  
**39%**



Military  
Veterans  
**1%**

## Business Services

**271**

New Businesses  
Engaged

**280**

Active Business  
Engagements

**1**

Rapid Response  
Events

**0**

Recruitment  
Events Held

## WIOA Adult & DW Barriers to Employment



Disability  
**22%**



Homeless  
**1%**



Justice Involved  
**11%**



English Language  
Learner  
**2%**



Single Parent  
**21%**



In-School  
Youth  
**5%**



Out of School  
Youth  
**95%**

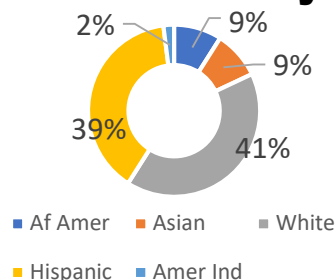


WEX  
**5%**

## WIOA Youth Details

## Program Participant Demographics

### Race/ Ethnicity

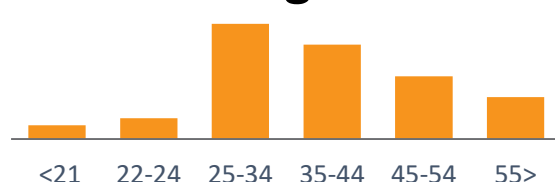


**42%**  
Male



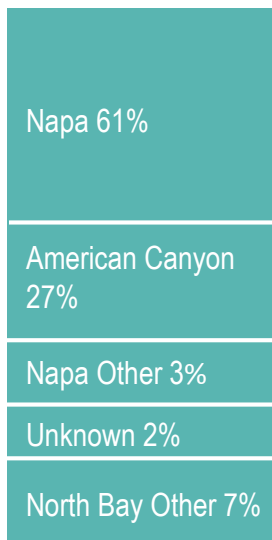
**58%**  
Female

### Age




## Geographics


### Cities of Residence



Workforce Alliance of the North Bay  
Providers of Services Report  
Program Year 2018-2019  
Quarter 4, 100% of Program Year

			Carry-ins from PY17-18	New Clients	Total Enrolled			Placements Area Plan = 80%			Exits Area Plan = 80%			Training Requirement - (20%) Area Plan = 100%			Contract Budget Quarter 4			
					(Qtr 4) Actual	Area Plan for PY	% Achieved of Qtr 4	(Qtr 4) Actual	Area Plan for PY	% Achieved of Qtr 4	(Qtr 4) Positive Exits	(Qtr 4) Negative Exits	(Qtr 4) % of Positive Exits to Total Exits	WIOA Funds Spent	Requirement- 20%	% Achieved of Training	(Qtr 4) Expended	Budget in PY	Total % Achieved	Combined
Lake	MPIC	Adult	16	28	44	52	85%	27	16	169%	27	3	90.0%	\$ 30,614	\$ 46,120	66.4%	\$175,332	\$190,934	91.8%	87%
		Dislocated Worker	11	32	43	44	98%	17	13	131%	17	7	70.8%	\$ 12,366	\$ 38,563	32.1%	\$130,984	\$159,651	82.0%	
Mendocino	MPIC	Adult	22	13	35	47	74%	17	19	89%	17	5	77.3%	\$ 40,928	\$ 45,424	90.1%	\$173,750	\$188,054	92.4%	89%
		Dislocated Worker	9	35	44	40	110%	20	9	222%	20	3	87.0%	\$ 17,086	\$ 38,811	44.0%	\$138,001	\$160,677	85.9%	
Marin	Marin HHS	Adult	27	43	70	69	101%	20	20	100%	20	15	57.1%	\$ 58,427	\$ 67,315	86.8%	\$269,570	\$278,686	96.7%	91%
		Dislocated Worker	1	12	13	30	43%	1	2	50%	1	1	50.0%	\$ 13,777	\$ 44,139	31.2%	\$152,189	\$182,733	83.3%	
Napa	Napa HHSA	Adult	22	57	79	47	168%	28	32	88%	28	10	73.7%	\$ 62,789	\$ 41,646	150.8%	\$172,413	\$172,413	100.0%	100%
		Dislocated Worker	12	40	52	64	81%	20	46	43%	20	6	76.9%	\$ 56,504	\$ 54,683	103.3%	\$226,386	\$226,386	100.0%	
System Totals			120	260	380	393		150	157		150	50		\$292,491	\$376,701	77.6%	\$1,438,625	\$1,559,534	92%	

Enrolled	Placements	Exits	Training	Contract Budget
100% and above	100% and above	80% and above	100% and above	Greater than 100%
85% to 99.9%	85% to 99.9%	70% to 79.9%	Below 100%	90% to 100%
Below 85%	Below 85%	69.9% and below		80% to 89.9%
				79.9% or below
				Missing invoices

			Carry-ins from PY17-18	New Clients	Total Enrolled			Placements Area Plan = 80%			Exits Area Plan = 80%			20% Work Experience Requirement Area Plan = 100%			Contract Budget Quarter 4		
					(Qtr 4) Actual	Area Plan for PY	% Achieved of Qtr 4	(Qtr 4) Actual	Area Plan for PY	% Achieved of Qtr 4	(Qtr 4) Positive Exits	(Qtr 4) Negative Exits	(Qtr 4) % of Positive Exits to Total Exits	WIOA Funds Spent	Requirement- 20%	% Achieved of Training	(Qtr 4) Expended	Budget in PY	Total % Achieved
Lake	MPIC	Youth	8	5	13	29	45%	4	9	44%	4	5	44.4%	\$ 26,518	\$ 33,802	78.5%	\$136,705	\$152,109	89.9%
Mendocino	MPIC	Youth	12	9	21	30	70%	8	10	80%	8	7	53.3%	\$ 23,894	\$ 32,817	72.8%	\$107,587	\$147,676	72.9%
Marin	PPS	Youth	3	11	14	22	64%	1	2	50%	1	0	100.0%	\$ 4,073	\$ 35,159	11.6%	\$94,216	\$158,215	59.5%
Napa	Napa HHSA	Youth	24	14	38	56	68%	7	28	25%	7	18	28.0%	\$ 5,237	\$ 42,935	12.2%	\$67,737	\$193,206	35.1%
System Totals			47	39	86	137		20	49		20	30		\$59,722	\$144,713	41.3%	\$406,245	\$651,206	62%